



# User Manual

## MY01 Base Station

---



Copyright © 2025 MY01, Inc.  
All rights reserved.

**P/N:** MYO-00729-M Ver.0  
**Publication date:** 26 June 2025

# Table of Contents

Introduction	3
Components	3
Setup Instructions	4
Daily Use	5
Specifications	6
Contact and Support	7

# Introduction

---

The MY01 Base Station is a component of the Continuous Perfusion Sensing Technology (CPST) Platform intended to transform trauma programs by converting complex biological signs into dynamic, actionable, real-time data to facilitate better decision-making. This streamlined system — comprised of the Mobile Device Cart and its Companion Tablet — enables hospital staff to access and interact with the MY01 Mobile Application at the patient's bedside.

## Notes

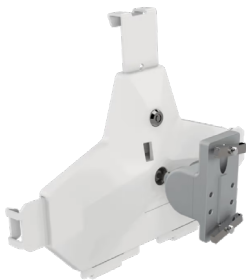
- The cart should be fully assembled and pre-configured by a MY01 representative prior to use.
- The cart should only be used in a healthcare facility environment.

# Components

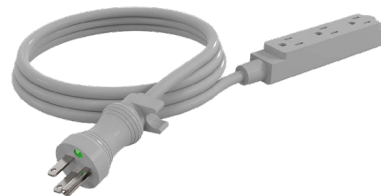
---

The MY01 Base Station's Mobile Device Cart comprises the following components:

Tablet mounting bracket



Extension cord



Supply caddy



Utility box



# Setup Instructions

## Unboxing and initial setup

Upon delivery of the MY01 Base Station, a local MY01 representative will visit your location to assemble the cart components. Once assembled, you can select a combination for the supply caddy lock and write it on the label affixed to the supply caddy's lid.

<b>Reordering Information</b> Submit your Purchase Order (PO#) to <a href="mailto:sales@my01.io">sales@my01.io</a> or call 855-799-6901	<b>Download the MY01 Mobile Application</b>  	<b>Lock Code</b> .....
<b>Your MY01 Representative</b>  	<b>MY01 Base Station User Manual</b> 	

## Setting personal combination numbers

- Factory combination is set at 0-0-0
- Combination must be on opening numbers prior to resetting
- You will find a hole on the outer ring for code reset
- Rotate lock until the hole comes into view
- Push into the hole with a paper clip or small pin and keep it pushed in
- Set numbers to desired combination
- Pull out the paper clip/small pin, and your new combination is set

— To lock, rotate to the 'locked' position; rotate one or more dials.

— To unlock, rotate dials to personal combination and 'unlock.'



## Transport guidelines

The Mobile Device Cart offers 360-degree rotation for effortless movement. It features a parking mechanism that can be engaged or disengaged manually or with a foot.

Wheels unlocked



Wheels locked



## The Companion Tablet setup

The MY01 Base Station includes a preconfigured Companion Tablet, designed exclusively for accessing MY01 resources. These resources include:

- The MY01 Mobile Application
- The MY01 website : [www.my01.io](http://www.my01.io)
- The tablet's settings.

Use your Base Station's unique login credentials to log into the MY01 Mobile Application.

### Network considerations

- If your facility offers a dedicated, secure WiFi network for medical devices, prioritize connecting to that network.
- Alternatively, a cellular data plan can also be implemented for your tablet which could be useful if your WiFi connection is unreliable.
  - You can reach out to [info@my01.io](mailto:info@my01.io) if questions arise about a cellular data plan for your tablet.

# Daily Use

---

## Storing the power cord

When the cart is not in use or the tablet is not being charged, the extension cord should be wrapped and stored on the unit. Wrap the cable firmly around the upper handle and lower handle cord wraps located on the back of the unit pole.

## Docking the MY01 device

The Mobile Device Cart's supply caddy can be used for storage, including MY01 Continuous Compartmental Pressure Monitor boxes.

## Maintenance Note

The materials used in the cart construction are resistant to degradation when exposed to commonly used hospital cleaning agents, including Isopropyl Alcohol, Hydrogen Peroxide and Quaternary Ammonium Compounds.

### Inspection checklist

To ensure continuous optimal performance, regular inspections of your MY01 Base Station are recommended. Following these steps can help maintain an uninterrupted workflow.

Items	Action	Benefit
Inspect tablet or monitor adjustment	Check movement and adjustment of tablet or monitor, including full range of motion.	Facilitates simple height and ergonomic adjustments; ensures comfortable use by clinical staff.
Casters	Check casters for proper tightness, ensure casters are free of dirt and grime and operate smoothly.	Mitigates risk of injury due to loose casters. Ensures proper maneuverability of the workstation.
Inspect mounted accessories	Check for secure fit to mount area and tighten if necessary.	Ensure stable accommodation of peripheral device holders and other accessories and supplies.

## Specifications

Tablet Specifications	
Tablet bracket weight capacity	1.59 kg / 3.5 lbs
Tablet charging port	USB-C or Lightning <i>(depending on Tablet model)</i>
Cart Specifications	
Cart weight	16 kg / 35 lbs
Base Length	44.9 cm to 45.4 cm / 17.7 in to 17.9 in
Maximum cart height	155 cm / 5 ft <i>(including tablet bracket)</i>

# Contact and Support

---

ITEM	SKU
<i>MY01 Base Station</i>	
Mobile Device Cart	MY01-CART
Companion Tablet	<ul style="list-style-type: none"><li>• MY01-TBLT</li><li>• MY01-TBLT-LTE</li></ul>

- For additional questions or technical support, contact us at [info@my01.io](mailto:info@my01.io) or +1 (855) 799-6901.
- For quotes or order inquiries, contact us at [sales@my01.io](mailto:sales@my01.io) or +1 (855) 799-6901.

